

MultiCAM

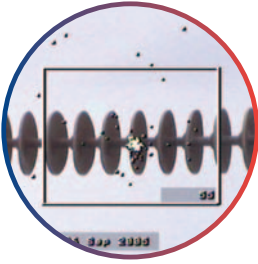
UV/IR Multispectral Daylight Camera

The MultiCAM System provides a simultaneous video image of an infrared spot and corona. This information assists the user in determining the location of the hot spot and/or corona and also, by a close examination, its possible cause. Since the video provides a moving image, it is possible to determine the seriousness of the hotspot (i.e. how the pattern develops over time), the characteristics of the corona source and to identify the type in question.

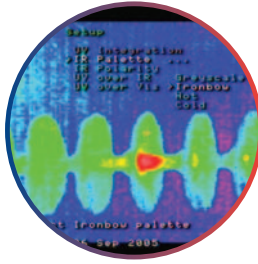
Features of MultiCAM

- It is a diagnostic tool that enables the user to locate and identify corona discharge and infrared hot spot activity on electrical equipment.
- It can operate in daylight or at night (with the help of artificial light).
- It produces a video image of the hot spots and of a corona discharge which is superimposed on the object. This allows the user to determine the exact location of the hot spot and of the corona in respect of the real image.
- It is portable, i.e. it fits into a carry-case and is powered by a rechargeable battery lasting approximately 40 minutes per charge. The battery is fitted into the camera housing.
- It is a pick up and go device requiring little or no assembly on removal from its carry case. It is easy to carry the camera on board an aeroplane.
- Its output is a standard composite video signal and it can be connected to a suitable portable video recorder that allows for the recording of results on site.
- Ergonomic design ensures that control buttons fall easily to hand when operating.
- High quality colour viewfinder display.

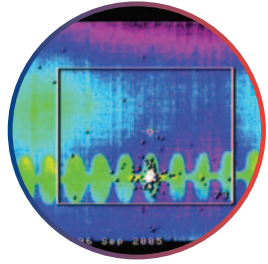




Daylight + UVc



Infrared



Infrared + UVc

System Specifications

Optics

Field of view:

8° Horizontal 6° Vertical

Focus range:

3 m to infinity

Detector Sensitivity

Infrared:

LWIR: 8 to 12 μm , NETD 250 mK,
384 x 288 pixels, 35 μm pitch
false colour palette

Lifetime:

Infinity under normal usage

UVc:

240 to 280 nm, solar blind

Lifetime:

Infinity under normal usage

Visible:

3 Lux

Video Camera Output

Camera resolution:

460 (H) TV lines (NTSC/PAL)

Scanning resolution:

525 lines EIA (NTSC)

625 lines CCIR (PAL)

Zoom factor:

25 x optical, 12 x digital

Physical Dimensions

Length:

270 mm

Width:

150 mm

Height:

200 mm

Weight:

Approximately 2.6 kg
excluding battery

LCD Viewfinder

Type:

SVGA colour micro display

Mounting:

Positioned on rear of the camera

Battery and Charger

Power supply:

Re-chargeable Li-Ion cells

Battery operation time:

Approximately 40 minutes

Charger power supply:

90 V to 250 VAC @ 50 to 60 Hz

Temperature Range

Operating temperature:

-15 °C to 50 °C (at a humidity
of up to 95% RH)

Storage temperature:

-25 °C to 60 °C

Specifications subject to change without notice.

Contact details: Sensor Science & Technology

CSIR

PO Box 395

Pretoria

0001

Tel: +27 12 841 2817

Fax: +27 12 841 4038

E-mail: ajchaffe@csir.co.za - marketing

rstolper@csir.co.za - technical

Website: www.corocam.co.za

Supported by Eskom Holdings (Pty) Ltd South Africa